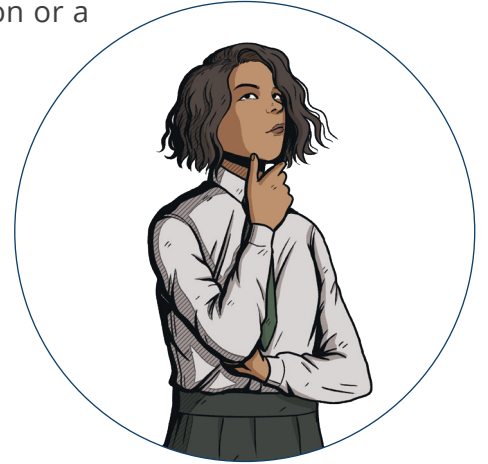




# SPaG Starters **Apostrophes for Possession**

If we are writing about something which belongs to a person or a thing, we add an 's to the end of the person or thing. The exceptions to this are:

- if the person or thing already ends in an s and is a plural (more than one), we put the apostrophe **after** the s, and don't add another one;
- the word **it's** only has an apostrophe to show contraction from **it is**. If something belongs to **it**, we write **its**.



Rewrite the sentences, correcting any mistakes.

1. Jude's bag got wet in the rain on his way home from school.  
Its now completely drenched.

---

---

2. The students performance had to be stopped because of an electrical problem; its unlikely she will be able to continue.

---

---

3. The teams performance was astounding. The team captains speech at half time had really motivated everyone.

---

---

4. Stephanies writing wasn't sensational, she claimed that it's hard to think of ideas on the spot.

---

---

5. The teacher's tie was perfectly coordinated with his socks.

---

---



# SPaG Starters **Apostrophes for Possession** **Answers**

1. **Jude's** bag got wet in the rain on his way home from school. **It's** now completely drenched.
2. The **student's** performance had to be stopped because of an electrical problem; **it's** unlikely she will be able to continue.
3. The **team's** performance was astounding. The team **captain's** speech at half time had really motivated everyone.
4. **Stephanie's** writing wasn't sensational, she claimed that **it's** hard to think of ideas on the spot.
5. Correct!

