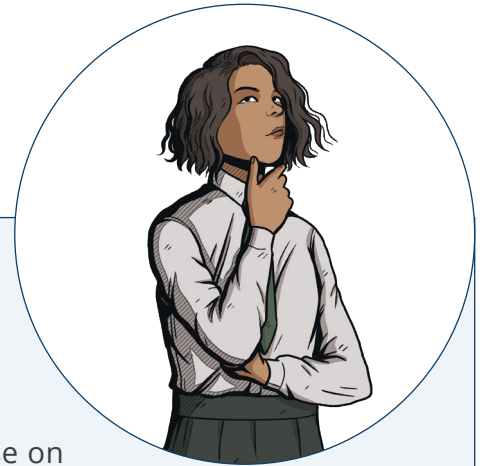


SPaG Starters **Complex Sentences**

A complex sentence has an independent clause (a phrase with a subject and verb which makes sense on its own) and a subordinate clause (a phrase which doesn't make sense on its own).



e.g.

I made the decision to tell the head teacher what had happened, thinking carefully about what I was going to say.

The main clause (independent clause) in blue makes sense on its own, but the subordinate clause in green does not. So this is a complex sentence.

Can you spot the complex sentences?

1. The student, who had been off for a few days, had to catch up on some missed work.
2. The woman dropped her bag and her purse fell out of it.
3. As the books were too heavy, the shelf fell off the wall.
4. Suddenly, as everyone was watching, she tripped over on the pavement.
5. The school canteen had sold out of ham sandwiches but they did have cheese ones left.

Now write two complex sentences of your own!



SPaG Starters **Complex Sentences** Answers

1. Complex
2. Compound – two independent clauses joined by a conjunction
3. Complex
4. Complex
5. Compound

