



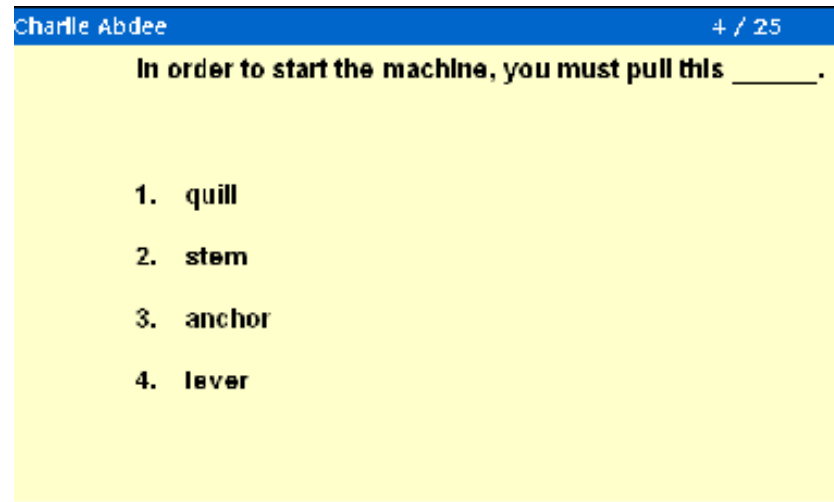
Accelerated  
Reader<sup>TM</sup>  
Advantage

## What Parents Need To Know





- STAR Reading assessments are the starting point for the Accelerated Reader™ Program
- The assessment is a 10 minute computer-adaptive test to help teachers assess reading ability
- The results will identify individual book level reading ranges (ZPDs) which support teacher judgements on guiding pupils to Accelerated Reader books





**ZPD** - A range of book levels recommended for pupils. Ideally they should begin choosing books at the beginning of the range.



**Book Level** – An estimate of the reading difficulty of the text of each book on the Accelerated Reader scheme. The book level is based on average sentence length, average word length, vocabulary difficulty and frequency of words.

# ZPD and Books



Too Easy

ZPD: Just Right

Too Hard

2.8

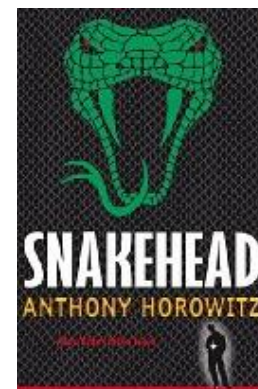
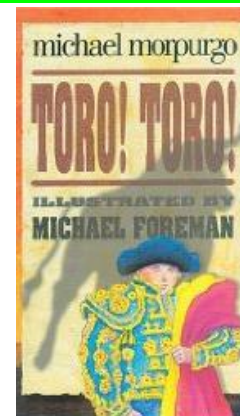
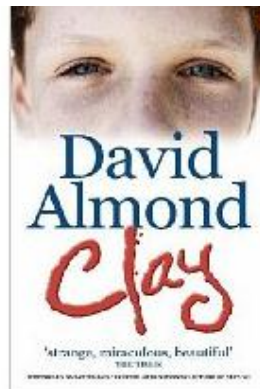
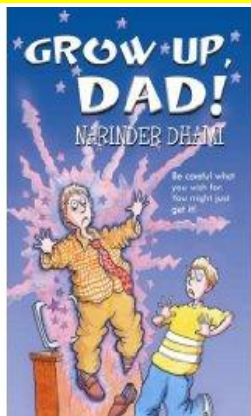
3.2

3.8

4.4

5.0

5.4



# Matching books to individuals



Life Experiences

Geographic  
Location

Reading Habits

Reading Skills

Family and Friends

Interests

Native Language

Reading  
History

Feelings about Reading  
and School

Maturity







- Teachers guide pupils to select books within their ZPD range and according to their interests
- Pupils take comprehension-based quizzes in school on the books they have read

**RP** The Red Box

Who was going to give the class a talk about snakes?

A. Jamila

B. Tessa

C. Mr Belter

D. Mr Keeping

Reading Practice

Question 1 of 5 [Next](#)

# Teachers monitor pupils progress



Teachers monitor quiz results  
and adjust ZPDs as needed

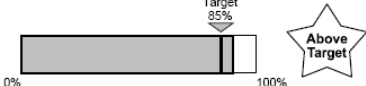
85% and above average score  
on quizzes indicates good  
comprehension and will lead to  
greater progress in reading

## Reading Practice TOPS Report Reprint for Annie Fernandez Printed 07 August 2009 15:07:18

School: Renaissance Learning Test School  
Class: Year 7

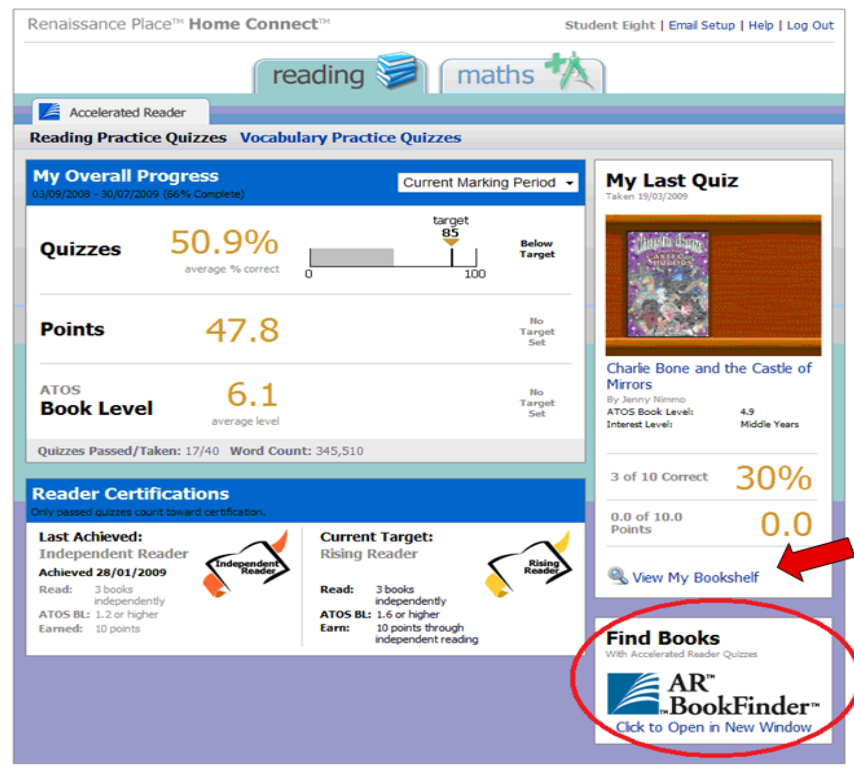
Year: 7  
Teacher: Mr R Mellard

What I Read	How I Did
Eco-Wolf and the Three Pigs: Seriously Silly Stories by Anholt, Laurence	Correct: 10 of 10    Percentage Correct: 100% ●●●●●●●●●● <i>Awesome, Annie!</i>
ATOS BL <sup>a</sup> : 3.9 Quiz Number: 203587    F/NF: Fiction Quiz Date: 12/05/2009 13:17    Word Count: 1,618 Interest Level: Lower Years (LY) TWI: Read Independently	Points Earned: 0.5 of 0.5

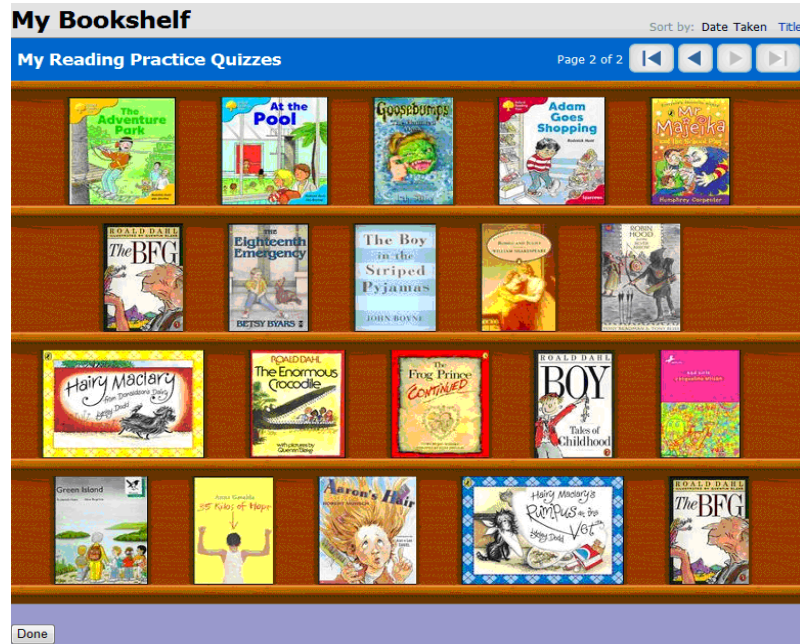
My Progress in 2008 - 2009 01/08/2008 - 12/05/2009 (77% Complete)	
<p>Average % Correct: 90.2%</p>  <p>0%    Target 85%    100%    Above Target</p>	<p>Points Earned: 53.6 No Target Set</p>
<p>Average ATOS BL: 3.2 No Target Set</p>	<p>Marking Period Totals Quizzes Passed: 111 Quizzes Taken: 111 Words Read: 156,976</p>



- Parents can track their children's reading from home using the Internet site, Home Connect
- Parents can set up their email address to receive automatic feedback







'My Bookshelf' shows all all books the pupil has read and quizzed

## Book Details

### Animals Building Homes



Quiz Number: 209970  
Author: Wendy Perkins  
ATOS Book Level: 3.3  
Interest Level: Lower Years  
Points Possible: 0.5  
Word Count: 609  
F/NF: Non-fiction  
Language: English

Simple text explains the varied ways in which such animals as beavers, hummingbirds, termites and bald eagles build their homes.

#### Quiz

##### Reading Practice

#### My Results

Taken 14/08/2008

Read Independently



5 of 5 Correct

100%

0.5 of 0.5 Points

0.5

##### Vocabulary Practice

Not Taken

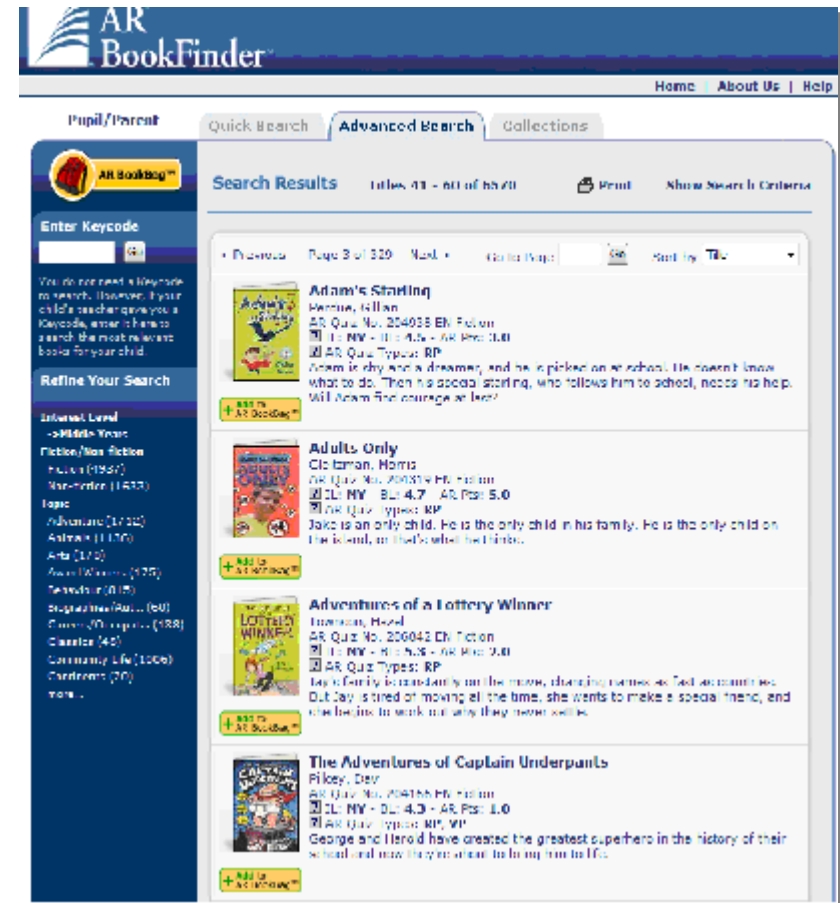
Done

Clicking on the book cover allows you to see the quiz results for each book

# Find Books With AR BookFinder™



- AR BookFinder is a search engine for all books with Accelerated Reader quizzes
- Advance search by various book criteria and see all book details.
- Create wish lists





STAR Reading test gives  
**ZPD** for book selection

Pupil selects books based  
on ability and interest

Target **85%** on quizzes  
shows comprehension

**BookFinder** allows the  
checking of books at home

**Home Connect** shows  
progress in AR

